

W.F. Norman Corporation

214 North Cedar • P.O. Box 323 • Nevada, MO 64772



Toll Free: 800-641-4038

Phone: 417-667-5552

Fax: 417-667-2708

Email: info@wfnorman.com

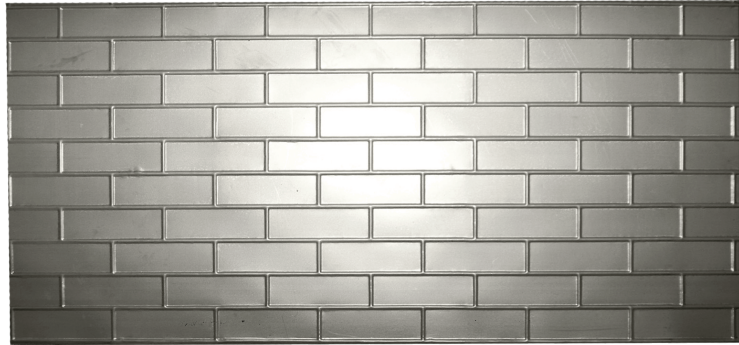
EXTERIOR SIDING

Pressed Brick

Sheet Size 28" x 60"
Brick Size 2 3/4" x 8 1/2"

Galv. \$49.50

Copper \$148.50

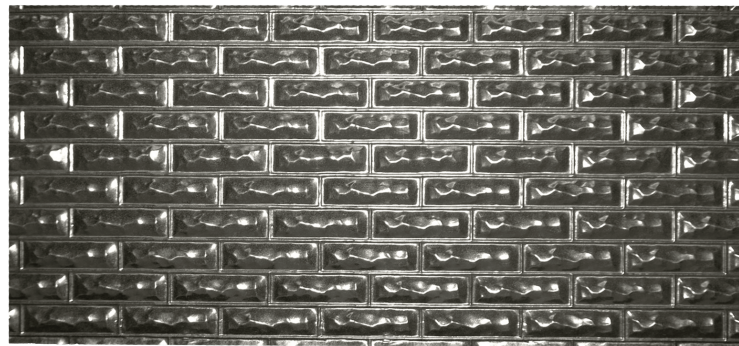


Rock-Faced Brick

Sheet Size 28" x 60"
Brick Size 2 3/4" x 8 1/2"

Galv. \$49.50

Copper \$148.50



Pitch-Faced Stone

Sheet Size 28" x 60"
Stone Size 7" x 12"

Galv. \$49.50

Copper \$148.50

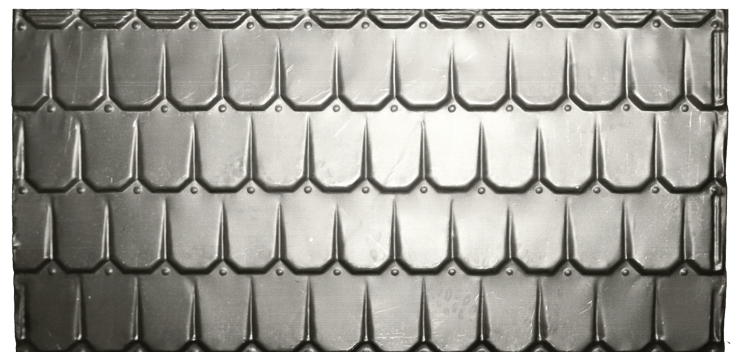


No. 3 Cluster Shingle

Sheet Size 24" x 48"
Shingle Size 4" x 5 1/2"

Galv. \$48.00

Copper \$144.00



PLEASE NOTE: Galvanized steel from the factory can vary in color and shine from one piece to another. If left unpainted they may discolor unevenly after installation. If color variation is not acceptable, we recommend the galvanized be painted.